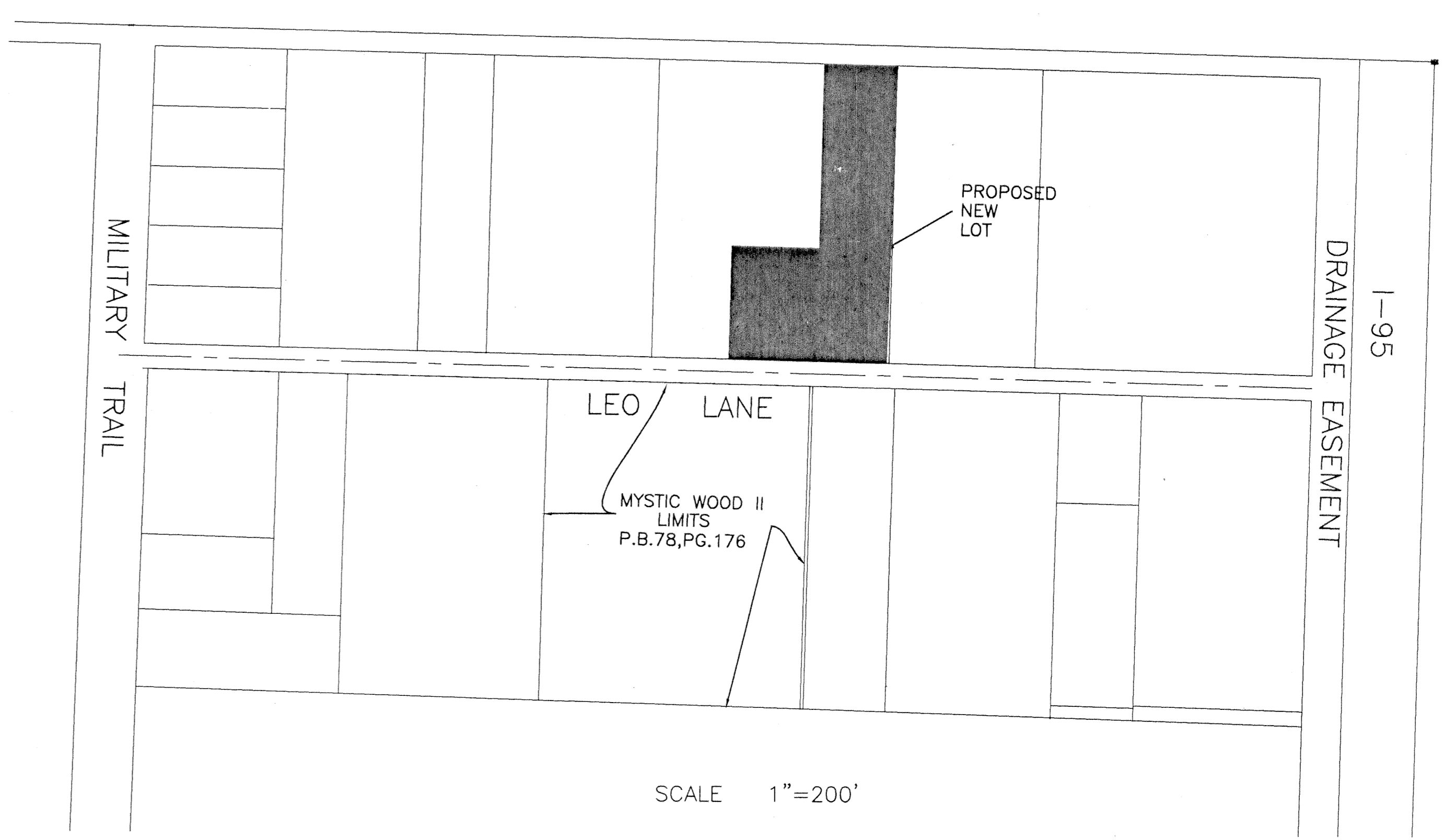
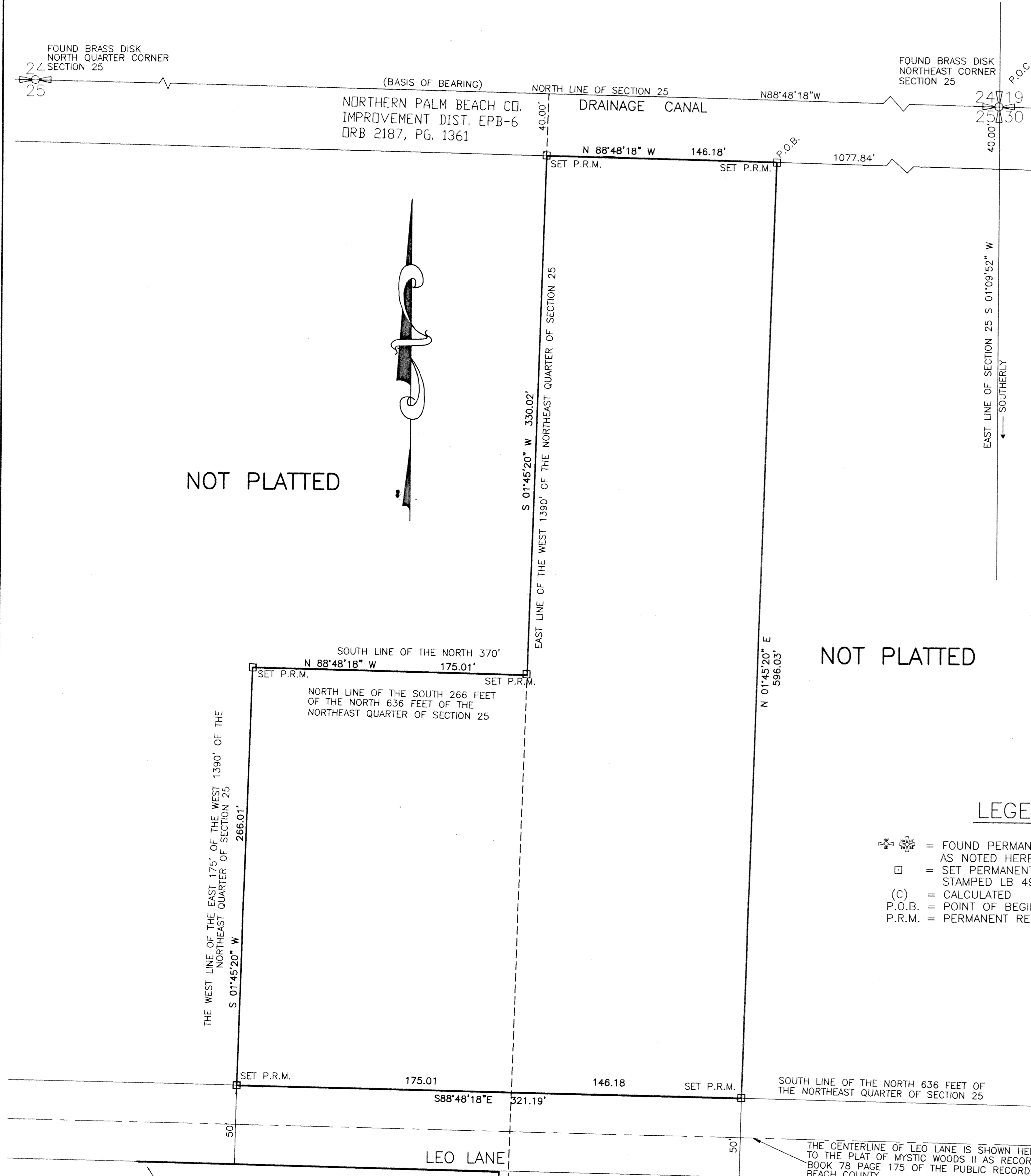


PALMS EDGE

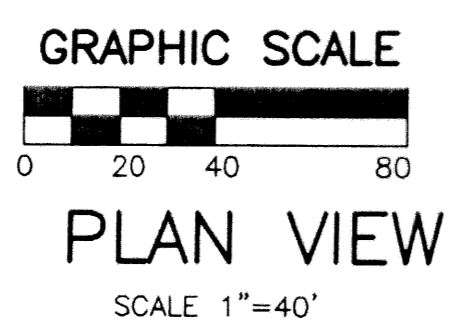
A SUBDIVISION LYING IN SECTION 25, T42S, R42E, RIVIERA BEACH., PALM BEACH CO., FL.

110



LEGEND

- ⊗ = FOUND PERMANENT REFERENCE MONUMENTS AS NOTED HEREON.
- = SET PERMANENT REFERENCE MONUMENTS STAMPED LB 4942
- (C) = CALCULATED
- P.O.B. = POINT OF BEGINNING
- P.R.M. = PERMANENT REFERENCE MONUMENT



MYSTIC WOODS II
P.B.78, PG.176

SHEET 2 OF 2

PREPARED BY:
VELCON GROUP, INC.
702 S.W. PORT ST. LUCIE BLVD.
PORT ST. LUCIE, FL. 34953
LICENSED BUSINESS NO. 4942